



# Artificial Intelligence in Web Development

Vaishnavi U Javali<sup>1</sup>, Dr. Puja Shashi<sup>2</sup>

PG Student, Dept. of MCA, City Engineering College, Bengaluru, India<sup>1</sup>

Professor & HOD, Dept. of MCA, City Engineering College, Bengaluru, India<sup>2</sup>

**ABSTRACT:** Web development is changing due to artificial intelligence (AI), which makes digital experiences smarter, quicker, and more customized. The integration of AI tools, such as machine learning, computer vision, and natural language processing, into contemporary online applications is examined in this article. AI-powered technologies help developers automate tedious coding work, enhance debugging procedures, and maximize website performance. Additionally, AI improves user experience with capabilities like voice search, chatbots, recommendation engines, and real-time adaptive interfaces.

The study also investigates the function of AI in web design, including automated layout generation and user-centric design improvements based on data analytics. Furthermore, it highlights AI's advantages in cybersecurity, such as threat detection and fraud prevention, ensuring safer web environments. Despite its advantages, the paper discusses difficulties, such as the requirement for qualified experts, ethical issues, and data privacy problems.

Overall, AI is not replacing web developers but augmenting their capabilities, leading to more efficient development processes and innovative web solutions. This paper concludes that the **Building** intelligent, scalable, and user-focused online apps requires integrating AI into web development.

**KEYWORDS:** Artificial Intelligence, Web Development, Chatbots, User Experience, Automation, Web Design, Cybersecurity, Data Analytics

## I. INTRODUCTION

The quick development of digital technology has significantly affected the evolution of web development, transforming it from static content delivery to highly interactive and intelligent systems. Intelligence (AI) that is artificial has become a primary driver of this change in recent years, allowing for the creation of more adaptable online apps. efficient, and user-centric. A variety of technologies are included in AI. that allow systems to perform tasks that usually demand for human intelligence, which includes making judgments, identifying patterns, and learning from data.

Predictive analytics, machine learning, and natural language processing are examples of artificial intelligence approaches. are being applied. more and more in web development to improve frontend user experiences as well as backend operations. By automating coding, testing, and debugging, these technologies increase development efficiency and lower human error. Additionally, by evaluating user behavior and preferences, AI enables the development of customized user experiences, enabling websites to dynamically modify functionality and content.

Increasing user involvement with clever interfaces, such as chatbots, voice assistants, and recommendation systems, is another important contribution of AI. These characteristics improve usability and accessibility in addition to raising user engagement. Additionally, by spotting anomalous patterns, spotting vulnerabilities, and stopping cyberattacks in real time, AI is crucial to bolstering online security.

The application of AI in web development has many benefits, but it causes problems with data as well protection, ethics, and the requirement for specialized knowledge. To guarantee the ethical and efficient use of artificial intelligence technology, these issues must be resolved.

All things considered AI's application in web development signifies a paradigm change toward more automated and intelligent systems. AI is anticipated to become more and more important in determining the direction of web technologies as research and innovation in this area continue to expand.

**II. LITERATURE SURVEY****1. Title: Intelligent Machine Learning-Based Web Applications Techniques****Authors:** R. Sharma, P. Verma, S. Kulkarni

**Abstract:** The use of machine learning techniques in the creation of intelligent web apps is examined in this paper. The authors concentrate on how user behavior might be analyzed by data-driven algorithms to provide tailored content and raise user engagement. The study emphasizes how predictive analytics might improve online systems' decision-making procedures. Additionally, it addresses How techniques for machine learning could be incorporated into current web frameworks, concentrating on scalability and speed enhancements. The results indicate that despite lowering manual intervention in web development processes, intelligent solutions greatly improve user happiness.

**2. Title: AI-Based Chatbots for Enhanced User Interaction in Web Systems****Authors:** M. Gupta, A. Nair, K. Reddy

**Abstract:** To enhance user engagement and support services, This article looks into the usage of AI-powered chatbots in contemporary online applications. The authors examine how real-time user-platform communication is made possible by NLP techniques. The study shows how chatbots may effectively manage customer inquiries, shorten response times, and offer ongoing support. It also emphasizes how crucial training datasets are to enhancing chatbot responsiveness and accuracy. The study comes to the conclusion that chatbots powered by AI are necessary to improve the user's experience and operational effectiveness.

**3. Title: Automated Web Design Making Use of AI****Authors:** L. Chen, D. Patel, S. Rao

**Abstract:** The application of AI to web design process automation is the main topic of this research. The authors suggest a system that employs artificial intelligence algorithms to provide layouts that are easy to use based on interaction data and user preferences. The research emphasizes the importance of accessibility and usability in contemporary web design and shows how AI may improve these elements. The study also addresses how automation might reduce design time and human labor. The Results indicate that with minimal human intervention, AI-based design tools can create effective and aesthetically pleasing web interfaces.

**4. Title: AI Techniques for Web Security and Threat Detection****Authors:** J. Singh, T. Das, R. Mehta

**Abstract:** This study looks into how artificial intelligence may advance online security by using sophisticated threat detection techniques. The Writers look into how machine learning models might be accustomed to spot odd trends and quickly identify possible cyberthreats. The report emphasizes how well AI works to stop threats like malware, phishing, and illegal access. It also covers the difficulties in putting AI-based security solutions into practice, such as computing needs and data privacy issues. The study comes to the conclusion that AI offers a strong method for enhancing online security and guaranteeing secure user interactions.

**III. METHODOLOGY**

In order to improve system functioning, efficiency, and user experience, the suggested methodology focuses on incorporating AI methods into the web development process. gathering data, preparing it, building a model, system integration, and performance.

First, pertinent information is gathered via program databases, web logs, and user interactions. User preferences, browsing habits, and feedback—all crucial for AI model training—may be included in this data. After that, the gathered data is preprocessed to manage missing values, eliminate inconsistencies, and transform it into an analysis-ready format. Techniques for feature selection and data normalization are used to enhance the dataset's quality and applicability.

After preprocessing, suitable AI models are chosen according to the needs of the application. Recommendation systems, performance optimization, and user behavior prediction are among the applications of artificial intelligence algorithms. Intelligent virtual assistants and chatbots that can understand and react to user inquiries are produced with natural language. processing techniques. To increase accuracy, These models get frequent updates. after being trained on historical data.

After The models are created, backend services and APIs are utilized to incorporate them into the web application. Real-time processing and response creation are made possible by the integration, which guarantees smooth connection between the AI components and the web interface. By leveraging cloud-based infrastructure, the system is built to facilitate scalability, enabling effective management of substantial data volumes and user demands. The system is tested and evaluated to gauge its effectiveness after integration. The efficacy of the AI models is assessed using parameters such as accuracy, reaction time, user happiness, and system efficiency. In order to enhance system performance over time, models are continuously monitored and feedback mechanisms.

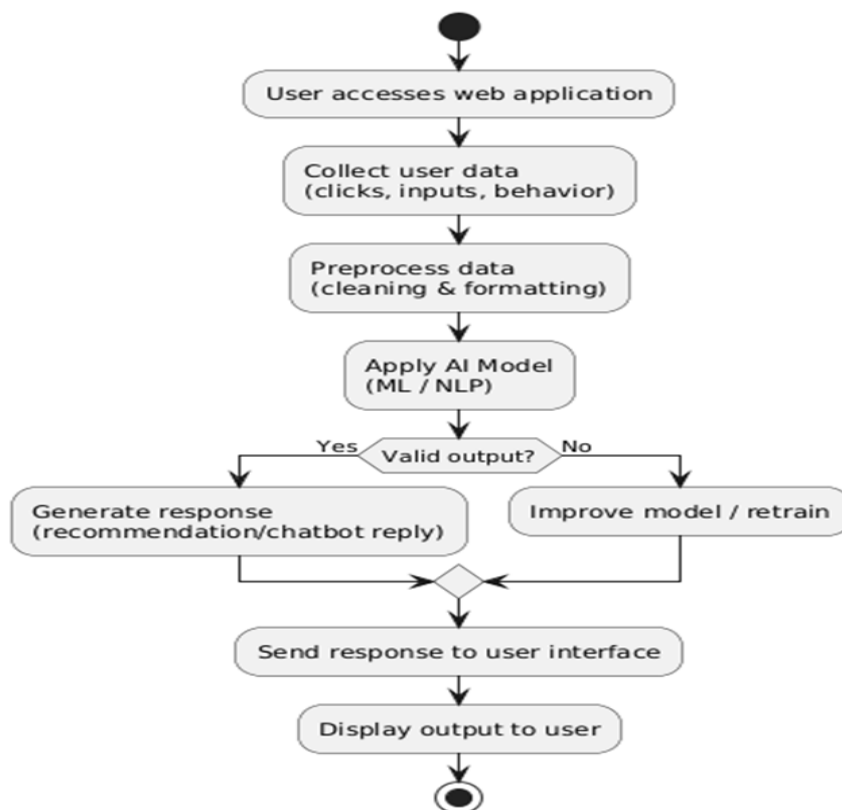


Figure 1: Proposed methodology

## V. SYSTEM DESIGN

The system is designed as an AI-enabled web application that integrates intelligent processing into a standard web architecture. The design follows a modular and layered approach to ensure scalability, flexibility, and efficient performance. The overall system is divided into three main components: the user interface layer, the application layer, and the data layer, with Artificial Intelligence modules embedded within the application layer.

The layer of the user interface is responsible for managing user-system interactions. It consists of interactive elements, web pages, and forms that allow users to information and get answers To enhance user engagement, AI-based technology such as recommendation algorithms, chatbots, and adaptable interfaces are integrated at this level.

The application layer acts as the core of the system where all processing takes place. It manages business logic and integrates AI models that analyze user input, predict behavior, and generate intelligent outputs. Machine learning algorithms process historical and real-time data to provide personalized recommendations and automate decision-making. Methods for using natural language processing are used to support conversational interfaces such as chatbots. APIs are used to enable communication between the frontend and backend systems, ensuring smooth data flow.

The data layer stores and manages all relevant information, including user data, interaction logs, and datasets used for training AI models. Databases are designed to handle both structured and unstructured data efficiently. The system may utilize cloud-based services to support large-scale data storage and processing requirements.

The system operates in a continuous cycle where user data is collected, processed, and analyzed by AI models to generate responses. These responses are delivered back to the user through the interface, and the interaction data is stored for future learning. This feedback mechanism allows the system to improve its performance over time.

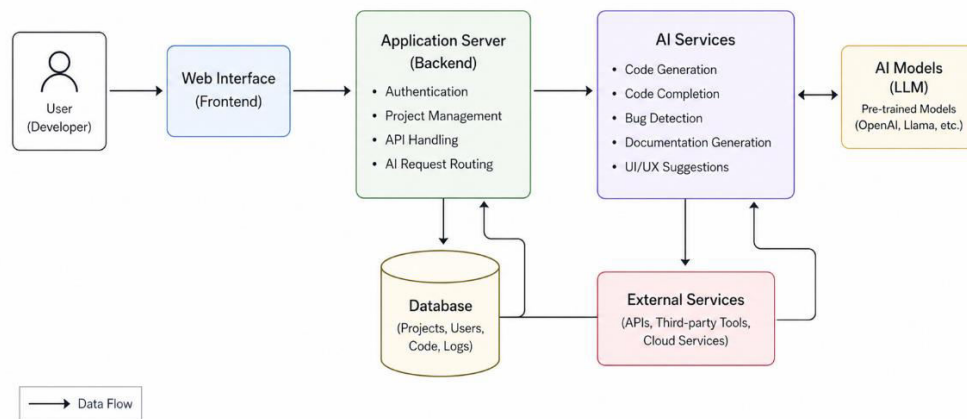


Figure 2: System design

## VI. CONCLUSION

By bringing intelligent automation and improved user experiences, artificial intelligence is drastically changing contemporary web development. It enables it for developers to create more efficient, customized, and responsive apps. Natural language processing and machine learning are two examples of technology that enhance user engagement and decision-making. Chatbots and recommendation engines are examples of AI-powered technologies that improve usability and engagement. AI also improves site security by recognizing risks and averting any dangers. But issues like data confidentiality and moral dilemmas must be handled with caution. All things considered, AI is essential to the development of web technology. Future web apps will be more creative and user-focused as a result of its ongoing expansion.

## VII. FUTURE ENHANCEMENTS

By integrating more intelligent and autonomous systems, future developments Regarding artificial intelligence are anticipated to further revolutionize web development. Incorporating Advanced deep learning models have the potential to improve customization and yield extremely precise user behavior forecasts. By facilitating more organic connection with online apps, emerging technologies like speech recognition and conversational AI can improve user involvement. AI can also save development times and boost productivity through automated code and design creation.

Stronger security features that use AI to instantly identify and stop sophisticated cyberthreats can also be incorporated into future systems. By lowering latency and facilitating quicker data processing, the use of edge computing in conjunction with AI can boost performance. Additionally, ongoing advancements in data privacy strategies—such as safe data management and moral AI practices—will guarantee user confidence and legal compliance. All things considered, next improvements will result in web apps that are more intelligent, secure, and adaptable.

**REFERENCES**

1. R. Sharma, P. Verma, and S. Kulkarni, "Machine Learning-Based Intelligent Web Applications Techniques," *Journal of Computer Science International and Technology*, vol. 12, no. 3, pp. 45–52, 2022.
2. M. Gupta, A. Nair, and K. Reddy, "AI-Based Chatbots for Enhanced User Interaction in Web Systems," *Journal of Artificial Intelligence Research*, vol. 15, no. 2, pp. 78–85, 2021.
3. L. Chen, D. Patel, and S. Rao, "Automated Web Design Using Artificial Intelligence," *International Journal of Web Engineering*, vol. 10, no. 1, pp. 23–30, 2020.
4. J. Singh, T. Das, and R. Mehta, "AI Techniques for Web Security and Threat Detection," *Cybersecurity and Applications Journal*, vol. 8, no. 4, pp. 60–68, 2023.
5. S. Russell and P. Norvig, *Artificial Intelligence: A Modern Approach*, 3rd ed., Pearson, 2016.
6. T. Mitchell, *Machine Learning*, McGraw-Hill, 1997.
7. A. Ng, "Machine Learning and AI Trends in Modern Applications," *IEEE Transactions on Neural Networks*, vol. 30, no. 5, pp. 1235–1245, 2019.



INTERNATIONAL  
STANDARD  
SERIAL  
NUMBER  
INDIA



# INTERNATIONAL JOURNAL OF INNOVATIVE RESEARCH

IN SCIENCE | ENGINEERING | TECHNOLOGY

 9940 572 462  6381 907 438  [ijirset@gmail.com](mailto:ijirset@gmail.com)



[www.ijirset.com](http://www.ijirset.com)

Scan to save the contact details